

THE COMPLETE EXIT & EMERGENCY LIGHTING RESOURCE

LONG-LIFE LED'S

- Illuminate your application up to 25 years

DUAL VOLTAGE OPERATION

- All models operate at 120 or 277 VAC

MODELS FOR ALL INSTALLATIONS

- ETL & UL rated for damp locations

POLYCARBONATE EXIT SIGNS

FEATURES/BENEFITS

- All units damp location listed, UL and ETL Listed
- UL94 V-0 Injection molded construction
- Dual exit plates are a standard feature
- 90 minutes of run time on all battery back-up units
- 120 or 277 VAC operation
- LED Lamp life of 25 years
- Comes with a mounting canopy for ceiling or wall mount applications

APPLICATIONS

- Industrial and commercial facilities



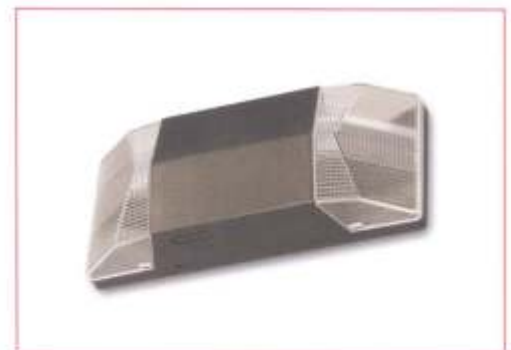
POLYCARBONATE EMERGENCY LIGHTING

FEATURES/BENEFITS

- All units damp location listed, UL and ETL Listed
- UL94 V-0 Injection molded construction
- 6V maintenance free battery provides 90 minutes of run time
- 120 or 277 VAC operation
- 20765 unit has capability for remote heads
- Features two 5.4W halogen lamps or MR16 lamps

APPLICATIONS

- Industrial and commercial facilities



POLYCARBONATE COMBINATION UNITS

MORE VALUE COMES STANDARD

- All Combo Units come with extra battery to run remote lighting heads

MULTIPLE INSTALLATION OPTIONS

- Mounting canopy for back or top-mounting included with each unit

POLYCARBONATE COMBINATION UNITS

FEATURES/BENEFITS

- All units damp location listed
- UL and ETL Listed
- UL94 V-0 Injection molded construction
- Dual exit face plates a standard feature
- 90 minutes of run time on all battery back-up units
- 120 or 277 VAC operation
- All combos come with an extra battery as a standard feature and can run up to 12W of remote heads
- LED lamp life of 25 years
- Comes with a mounting canopy for ceiling or wall mount applications

APPLICATIONS

- Industrial and commercial facilities

LED RETROFITS

FEATURES/BENEFITS

- Consumes 1.2 watts per lamp, very energy efficient!
- Made to UL 924 specifications
- Kits come with up to 4 adapters for universal use
- High efficiency LED's available for crisp even illumination
- Screw-in LED replacement lamps suitable for 120V use only
- Hardwire kits red 20716 and green 20718 available for 120V or 277 volt usage

APPLICATIONS

- Use in place of fluorescent and incandescent lamps inside exit signs

